

COLORS  
BODY: Metallic  
ACTUATOR: Black

SPECIFICATIONS  
FUNCTION: 2P2T ON-ON Non-Shorting  
RATINGS: 11A 125VAC, 5.5A 250VAC  
CONTACT RESISTANCE: Initial: 30mΩ Max. at 50VDC  
INSULATION RESISTANCE: 500MΩ Min. @ 50VDC  
ELECTRIC STRENGTH: 1,000VAC For 1 minute  
ELECTRICAL LIFE: 100,000 Cycles  
TEMPERATURE: -30° to 105°C  
APPROVALS:



A

A



B

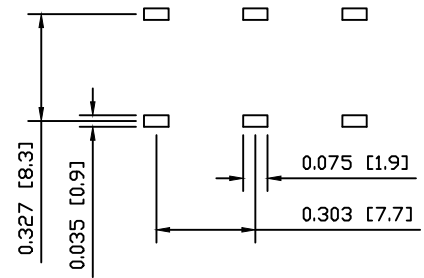
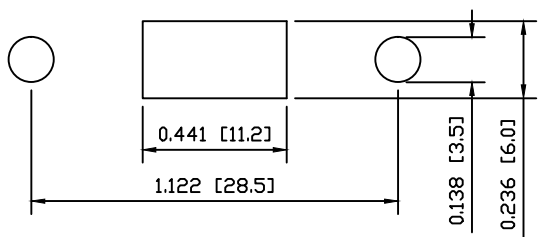
B

C

C

SUGGESTED PANEL CUTOUT

SUGGESTED PCB LAYOUT



MATERIALS  
UPPER BODY: Steel  
BASE: Phenolic Board, UL94 V-0  
ACTUATOR: Polyphenylene Oxide  
CONTACTS: Silver  
TERMINALS: Silver Plated Copper

UNLESS OTHERWISE SPECIFIED, DIMENSIONS ARE IN INCHES [MILLIMETERS]  
TOLERANCES ARE:  
DEC .X±0.2 ANG ± 1°  
.XXX±0.008 DRAWING NOT TO SCALE  
DRAWN BY: STACEY CHRISTIANSON

|                |                                       |                                |
|----------------|---------------------------------------|--------------------------------|
|                | P.O. Box 25110<br>Portland, OR 97298  | LAST REVISION:<br>OCT. 1, 2008 |
|                | DRAWING NUMBER: 03-LSU11-220001A9.dwg |                                |
| LSU11-220001A9 |                                       |                                |

8

7

6

5

4

3

2

1

D

D

